

In the heart of South Carolina.



**LEXINGTON COUNTY**

**CENTRAL**  
south carolina

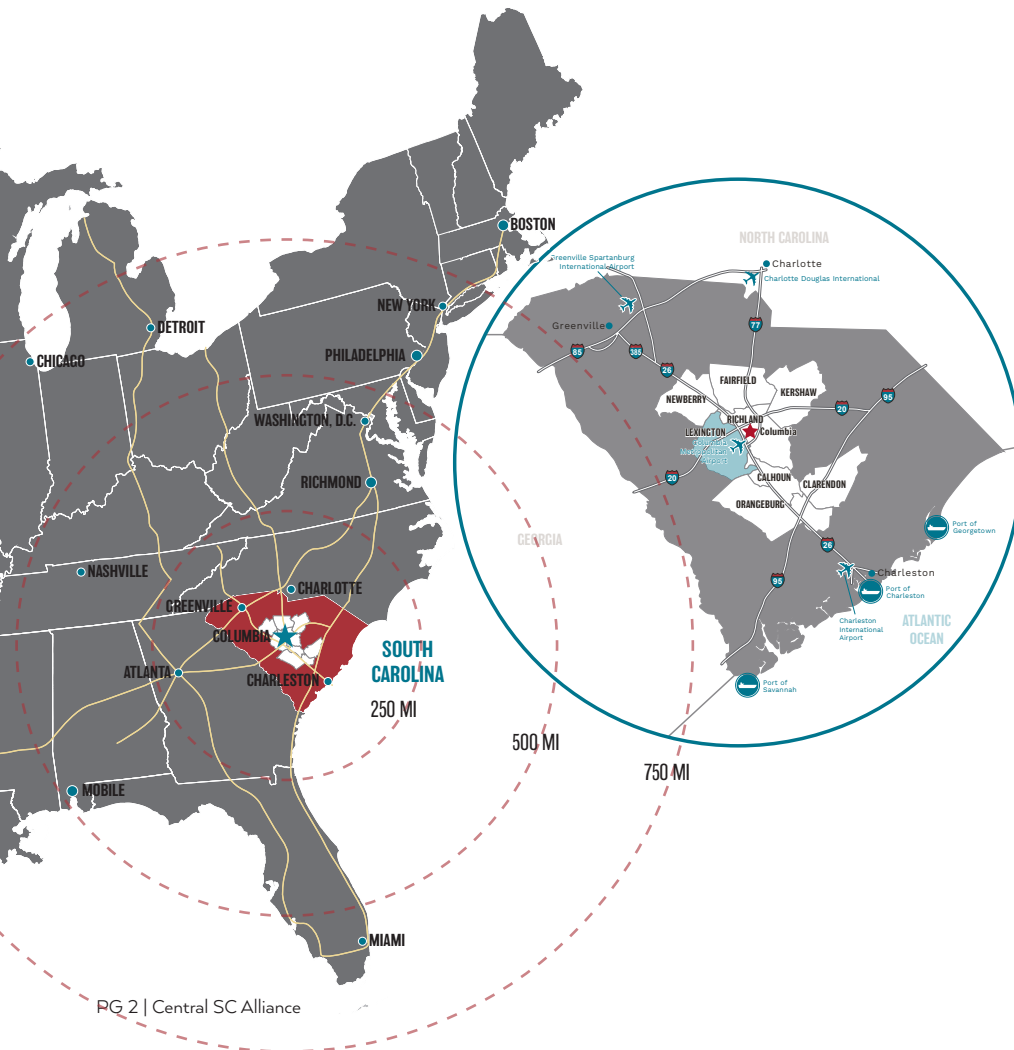
Business Friendly. Business Ready.

**Executive Summary**  
**2021**

# WHY CENTRAL SC?

Located in the heart of South Carolina, the Central SC Region is composed of South Carolina's capital city, Columbia, and eight surrounding counties: Calhoun, Clarendon, Fairfield, Kershaw, Lexington, Newberry, Orangeburg and Richland. Together, these areas host an average workforce of over 460,000 dedicated professionals.

Conveniently positioned in the center of the state and halfway between New York and Miami, the Central SC Region is crossed by four major interstates, providing unrivaled speed to market.



# LEXINGTON COUNTY

Just a stone's throw from our state capital and situated in the center of the state, Lexington County is ripe for businesses looking for convenience and a bustling business environment. Key transportation assets like the Columbia Metropolitan Airport are located within the county, while the Charlotte Douglas International Airport and the Port of Charleston are located within a two-hour drive of the county. These resources, combined with the presence of leading local educational institutions and one of the highest population growth rates in the state, have contributed to landing some of the world's most recognizable brands like Amazon, Michelin North America, and Home Depot.







# AN IDEAL LOCATION


APPROXIMATELY 2/3 OF THE NATION'S POPULATION IS ACCESSIBLE WITHIN A DAY'S DRIVE

## TRANSPORTATION NETWORK

 Lexington County Airport at Pelion: within the county 4,335 FT LONG BY 60 FT WIDE RUNWAY SUPPORTS SMALL SINGLE AND TWIN-ENGINE PISTON AIRCRAFT • RUNWAY UPGRADED IN 2017-18 • 10 T-HANGARS & 2 CORPORATE HANGARS • LOCATED IN THE SOUTHERN PORTION OF THE COUNTY, THE AIRPORT BOASTS 189.27 ACRES OF LAND

 Columbia Metropolitan Airport (CAE): within the county 36+ NONSTOP DAILY FLIGHTS TO 8 MAJOR MARKETS INCLUDING ATLANTA, CHARLOTTE, CHICAGO, DALLAS/FT. WORTH, NEW YORK, PHILADELPHIA & WASHINGTON, D.C. • SERVES 1.3 MILLION PASSENGERS ANNUALLY • DIRECT FLIGHTS TO MAJOR INTERNATIONAL AIRPORT (CLT) VIA CHARLOTTE • MAIN FREIGHT CARRIERS: FEDERAL EXPRESS, UPS, DELTA • 76,000 TONS OF CARGO PROCESSED IN 2019

 Charlotte Douglas International Airport (CLT): 107 miles N NONSTOP SERVICE TO 178 DESTINATIONS, INCLUDING 38 INTERNATIONAL • 6TH IN THE U.S. FOR AIRCRAFT MOVEMENTS • AVERAGING 1,575 DAILY AIRCRAFT OPERATIONS • HOME TO NORFOLK SOUTHERN'S CHARLOTTE REGIONAL INTERMODAL FACILITY

 Charleston International Airport (CHS): 111 miles SE WELCOMES OVER 4 MILLION PASSENGERS ANNUALLY • NONSTOP FLIGHTS TO 26 DESTINATIONS | TOP DESTINATIONS: ATLANTA, CHARLOTTE, NEW YORK, WASHINGTON, BALTIMORE, CHICAGO, NEWARK, BOSTON • SEASONAL DIRECT FLIGHT TO LONDON • HOME TO BOEING ASSEMBLY FACILITY FOR THE 787 DREAMLINER

 Port of Charleston: 121 miles SE 9TH LARGEST U.S. PORT • #2 U.S. PORT FOR NORTH EUROPE CONTAINER VOLUME • DEEPEST WATER IN THE SOUTHEAST • ALL MAJOR CONTAINER CARRIERS • EXPANDING NEO-PANAMAX SERVICE WITH CHANNEL DEEPENING TO 52', ENTRANCE TO 54' BY 2021 • INTERNATIONAL DESTINATIONS: AFRICA, ASIA, AUSTRALIA, CENTRAL AMERICA, EUROPE, SOUTH AMERICA • INTERMODAL AND MERCHANDISE RAIL SERVICES THROUGH CSX AND NORFOLK SOUTHERN

 Port of Georgetown: 153 miles E DEDICATED BREAKBULK & BULK CARGO • SPECIALIZED FOR CEMENT, AGGREGATES, FOREST PRODUCTS, METALS • CSX RAIL-SERVED WAREHOUSING SPACE • PROVIDES NEARLY 28 ACRES OF OPEN STORAGE AND OVER 100,000 SF OF WAREHOUSE SPACE

 Port of Savannah: 161 miles S LARGEST SINGLE-TERMINAL CONTAINER FACILITY IN THE NATION • OVER 3 MILLION SQUARE FEET OF WAREHOUSE SPACE • SERVED BY CSX & NORFOLK SOUTHERN • INTERNATIONAL DESTINATIONS: AFRICA, ASIA, AUSTRALIA, CENTRAL AMERICA, EUROPE, SOUTH AMERICA



### Shipping & Foreign Trade Zones

UPS SOUTHEAST REGION AIR HUB & FEDEX GROUND HUB LOCATED ON-SITE AT CAE • FTZ 127 LOCATED AT CAE • FTZ 21 LOCATED AT PORT OF CHARLESTON • INDIVIDUAL FTZ SITES ESTABLISHED ACROSS THE STATE



### Interstate Access:



PASS THROUGH LEXINGTON COUNTY



ACCESSIBLE 42 MILES SE



### Rail Service: CSX & Norfolk Southern

OFFER 2,400+ MILES OF RAIL STATEWIDE COMBINED • INTERMODAL FACILITIES LOCATED IN CHARLESTON & CHARLOTTE



EFFICIENT  
PORT  
OPERATIONS



NEARBY  
AIRPORTS &  
TRADE ZONES



SPEEDY  
INTERSTATE  
TRAVEL



ABUNDANT  
RAIL  
SERVICE

## ACCESS TO MAJOR CITIES



103  
MILES

201  
MILES

489  
MILES

639  
MILES

714  
MILES

1.5 hours

3 hours

7.25 hours

9.25 hours

11 hours

Charlotte, NC

Atlanta, GA

Washington, DC

Miami, FL

New York, NY

CONSIDERED ONE OF THE MOST EFFICIENT U.S. PORTS, THE PORT OF CHARLESTON HAS BEEN A MAJOR HUB FOR GLOBAL COMMERCE AND TRADE FOR OVER 300 YEARS.

# OUR PEOPLE

In Lexington County, our people are hardworking, highly educated, dedicated and skilled in a variety of industries. Companies that have opened new locations or expanded existing facilities in the county know this first hand. Their talents, ideas, and ambitions are a large part of what makes Lexington County *The Ideal Place to Grow Your Business*.

## DEMOGRAPHICS



**150.2K**  
LABOR FORCE  
Annual 2019



**2.3%**  
UNEMPLOYMENT  
Annual 2019



**306.9K**  
POPULATION  
Annual 2020 estimate



**31.5%**  
BACHELOR'S  
degree or higher



**91.2%**  
HIGH SCHOOL  
grad or higher



**57%**  
RESIDENTS  
age 18+



**2.55**  
HOUSEHOLD  
average size



**39.5**  
MEDIAN AGE  
of population



**49%**  
MALE  
population



**51%**  
FEMALE  
population

**5.25%**

SC POPULATION GROWTH RATE

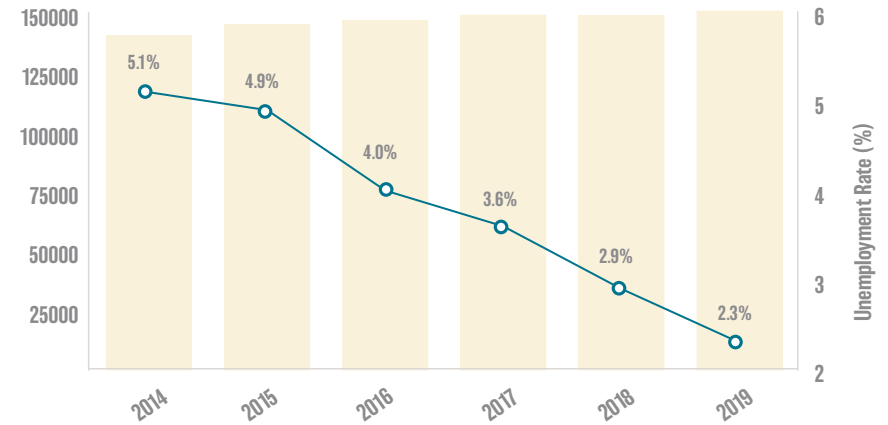
PAST FIVE YEARS

FASTER  
THAN

COMPETING SOUTHEASTERN STATES,  
THE SOUTHERN AVERAGE &  
THE UNITED STATES AVERAGE

U.S. Census Bureau

## LABOR FORCE & UNEMPLOYMENT TRENDS



## COMMUTING PATTERNS

**73,252**  
**OUTBOUND**

Top 5 Locations:  
Richland County  
Greenville County  
Charleston County  
Aiken County  
Spartanburg County



**75,752**  
**INBOUND**

Top 5 Locations:  
Richland County  
Greenville County  
Aiken County  
Orangeburg County  
Charleston County

**56,723** Live & Work in Lexington County

TRAVELERS AVERAGE

**30** MILES

IN

**30** MINUTES

EASY

**30-MINUTE OR LESS**

COMMUTE FOR

**60%**

OF CENTRAL SC WORKERS





# PROUD TO MANUFACTURE

PHARMA MANUFACTURING  
JOB CONCENTRATION

5.4X

THE NATIONAL  
CONCENTRATION

51,886

EMPLOYED IN MANUFACTURING

60-MINUTE DRIVE TIME

## DRIVE TIME POPULATION



553,184



798,660

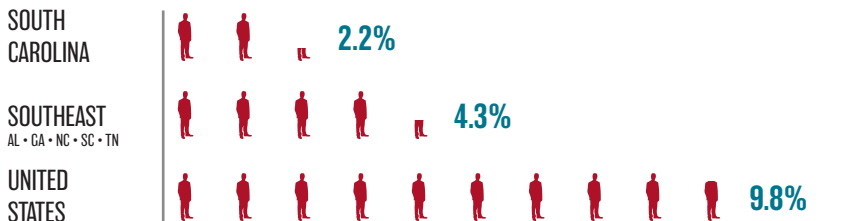


1,179,552

## LOWEST UNIONIZATION IN THE NATION

South Carolina maintains one of the lowest unionization rates in the nation, making the state a prime location for businesses seeking a reliable and stable workforce. Lexington County has **no known manufacturing unions**.

### TOTAL UNION MEMBERSHIP



### PRIVATE UNION MEMBERSHIP

1.3% SC  
3.0% SOUTHEAST  
5.9% US

### PRIVATE MANUFACTURING UNION MEMBERSHIP

1.5% SC  
4.6% SOUTHEAST  
8.1% US



LEXINGTON COUNTY  
IS HOME TO  
TWO STATE-OF-THE-ART  
MICHELIN MANUFACTURING  
PLANTS

## INTERNATIONAL PRESENCE BY FACILITY



Japan, France,  
United Kingdom  
11.4% (t)



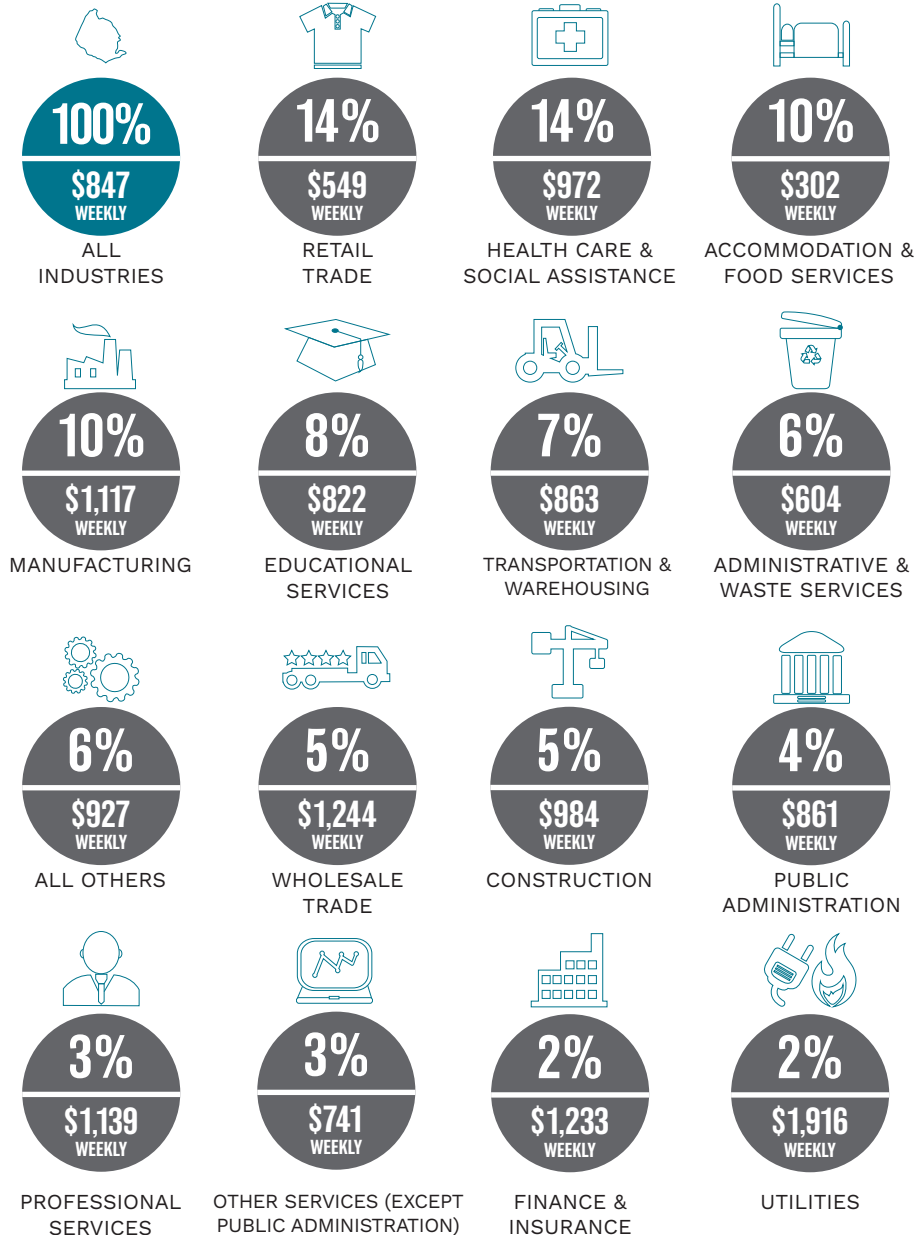
Germany,  
Canada, Ireland  
8.6% (t)



Australia,  
Colombia, Italy,  
Switzerland  
5.7% (t)

ALL OTHERS:  
China, Denmark, Finland,  
Netherlands, Singapore,  
Sweden  
2.9% (t)

# FLOURISHING INDUSTRIES



## LARGEST PRIVATE EMPLOYERS

COMPANY	PRODUCT/SERVICE	EMPLOYEES
Lexington Medical Center	Health care & general hospital	6,501-7,000
Dominion Energy	Electric and gas utility	3,001-3,500
Amazon	Distribution center for internet retailer & on-demand book making facility	2,500-3,000
Michelin North America Inc. (#5 & #7)	Passenger and earthmover tires manufacturing	2,001-2,500
United Parcel Service	Mail distribution, UPS ground hub and customer service center	1,501-2,000
Walter P Rawls & Sons Inc.	Vegetables, leafy greens	501-1,000
Hire Right	Employee background checks & talent acquisition services	501-1,000
Southeastern Freight Lines Inc.	LTL Services	501-1,000
Nephron Pharmaceuticals	Sterile inhalation and 503B outsourcing medicines	501-1,000
CMC Steel	Steel rounds, squares, angles, flats and channels	501-1,000
House of Raeford	Production of fresh chicken in all forms	251-500
Republic National Distributing Company	Wine and spirit distribution	251-500
Prysmian Cables & Systems (North America)	R&D, power cables for energy transmission; North American HQ	251-500
DHL Global Forwarding	Logistic services and freight transportation	251-500
US Foods	Food distributor and food-service supplier	251-500
Apex Tool Group	Headquarters (Division), electric & pneumatic tools	251-500
TD Bank	Bank administration and operations center	251-500
Otis Spunkmeyer	Manufactures muffins, cookies and cookie dough	251-500
Home Depot DC	Distribution center for Home Depot	251-500
Shaw Industries	Staple nylon & polymers for carpet yarn	251-500
Harsco Track Technologies	Manufactures railway maintenance equipment including rolling stock repair vehicles	251-500

\*Denotes regional or statewide total

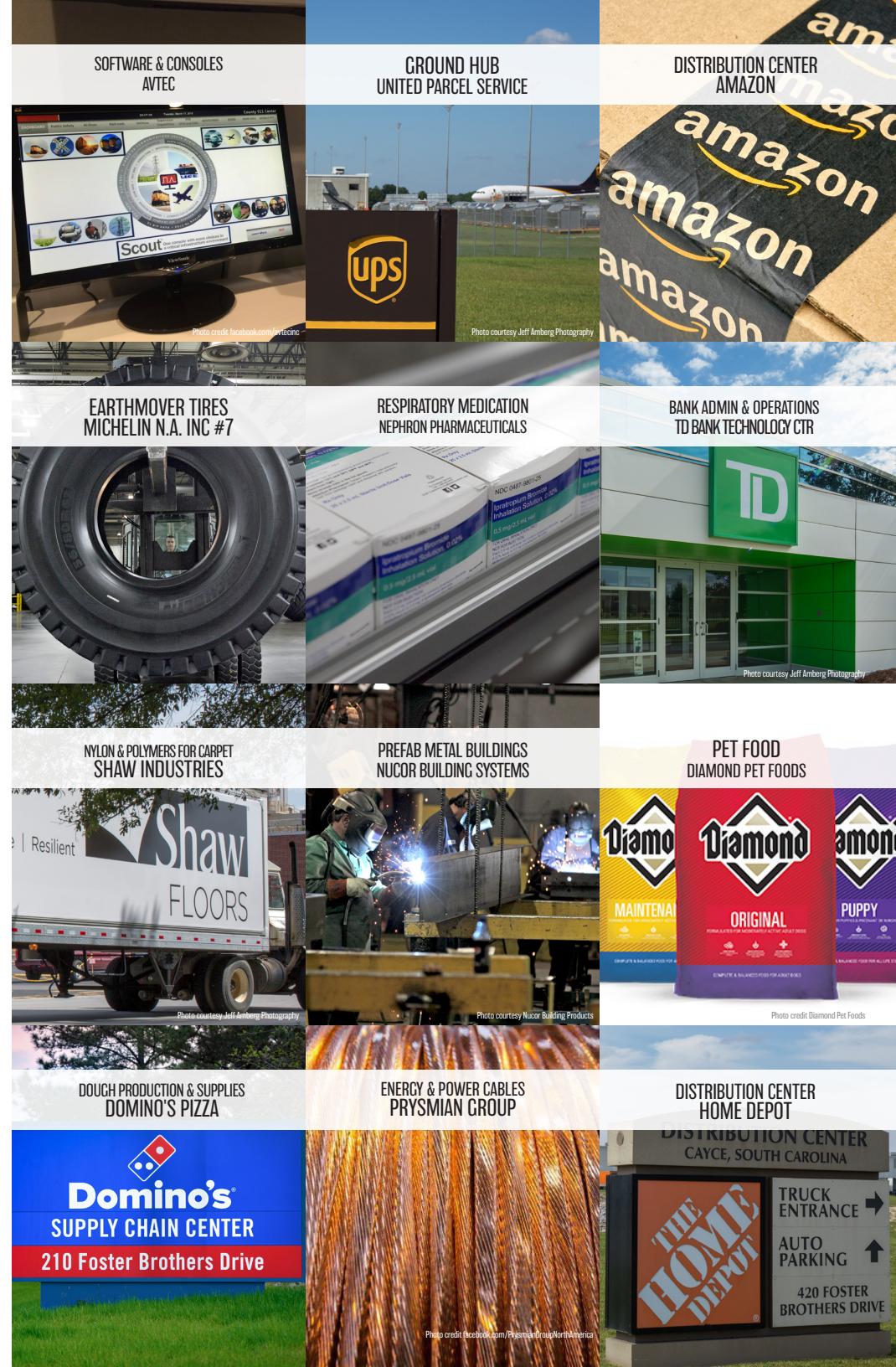


# MARQUEE COMPANIES

## DOMESTIC BRANDS



## INTERNATIONAL BRANDS





# WORKFORCE TRAINING



Established in 1961, readySC™ is one of the premier training programs in the nation. The program assists qualified employers with recruitment, curriculum development and training, instructors, training sites, and project management at little or no cost. Nearly 303,000 workers have been trained through readySC™ for companies like:



The largest higher education system in the state, composed of 16 colleges from around South Carolina and the parent organization to readySC™ and Apprenticeship Carolina™. Four of its colleges serve the Central SC Region:

MIDLANDS TECHNICAL COLLEGE • ORANGEBURG-CALHOUN  
TECHNICAL COLLEGE • CENTRAL CAROLINA TECHNICAL  
COLLEGE • PIEDMONT TECHNICAL COLLEGE



Apprenticeship Carolina™ works to increase the awareness and the use of registered apprenticeships in the state. More than 34,400 apprentices have participated in more than 1,070 programs available. Targeted industry clusters include:

ADVANCED MANUFACTURING & TECHNOLOGIES •  
CONSTRUCTION TECHNOLOGIES • ENERGY • HEALTHCARE  
• INFORMATION TECHNOLOGY • TOURISM & SERVICE  
INDUSTRIES • TRANSPORTATION, DISTRIBUTION & LOGISTICS

WORKFORCE TRAINING  
PROGRAMS ARE AVAILABLE TO  
EXISTING & INCOMING COMPANIES  
AT LITTLE TO NO COST OR  
MAY INCLUDE A  
TAX INCENTIVE.



Photo courtesy Midlands Technical College

# EDUCATIONAL INSTITUTIONS


12 colleges/universities are available to serve students in the Central SC Region. Below are some of the locations within the county and their specialized training programs/facilities, and major institutions nearby:



**University of South Carolina**   
35,000+ STUDENTS SERVED ANNUALLY • 56 NATIONALLY RANKED PGMS • #1 INT'L BUSINESS DEGREE PROGRAMS • NATION'S BEST PUBLIC UNIVERSITY HONORS COLLEGE

Specialized studies/facilities include: McNair Aerospace Center | Engineering | Moore School of Business: International Business graduate & undergraduate | Risk and Insurance Management | Hospitality, Retail and Sport Management | Carnegie Foundation designation



**Midlands Technical College**   
100+ EDUCATIONAL PROGRAMS • 9,000+ STUDENTS SERVED ANNUALLY • 25+ MANUFACTURING-RELATED PGMS • 7 CAMPUSES WITHIN THE Central SC Region • 2,000+ DEGREES AWARDED ANNUALLY


Specialized studies/facilities include: Mechatronics | Industrial Electricity/Electronics | Center of Excellence for Technology (CET) | Advanced Manufacturing | HAAS Shop Floor training facility | Business Accelerator



**Columbia College**   
APPROXIMATELY 1,500 STUDENTS SERVED ANNUALLY • OFFERS MORE THAN 30 MAJORS AND INDIVIDUALIZED PROGRAMS OF STUDY • STUDENT-FACULTY RATIO IS 11-TO-1

Specialized studies/facilities include: The Evening Extended Program: Offering 12 majors for working adults in the Midlands area | Master of Education| Art and Communications| Business, Mathematics, and Science Technology | Agriculture | Healthcare



**Columbia International University**   
MORE THAN 1,000 UNDERGRADUATE STUDENTS • 20+ UNDERGRAD MAJORS • AVERAGE CLASS SIZE OF 20 STUDENTS • REPEATEDLY RANKED AMONG BEST COLLEGES IN SC

Specialized studies/facilities include: Youth Ministry, Family, & Culture| Business & Organizational Leadership| 100% Online MBA, B.S., and Associates Degrees in Business| Inter-cultural Studies



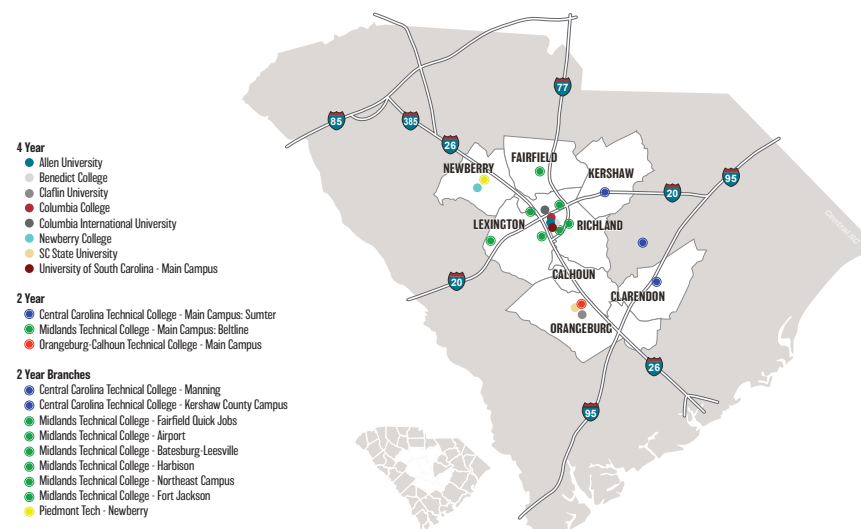
**Benedict College**   
AVERAGING 2,100 STUDENTS SERVED ANNUALLY • OFFERS 34 BACCALAREATE DEGREE PGMS • FOUNDED IN 1870 • LOCAL ANNUAL ECONOMIC IMPACT \$130M+

Specialized studies/facilities include: Tyrone Adam Burroughs School of Business and Economics | School of Education, Health and Human Services| School of Science, Technology, Engineering and Mathematics

Other regional institutions:



## LOCATIONS IN CENTRAL SC



## GRADUATES BY DISCIPLINE



**3,936**  
Health Professionals



**298**  
Mechanic & Repair Technologies



**932**  
Engineering & Engineering Tech.



**434**  
Information Technology



**5,356**  
Business



**213**  
Precision Production

Disciplines showcased are those of high demand within the Central SC Region and do not include all fields of study provided by institutions of higher learning.



# LIVING IN LEXINGTON

## AFFORDABLE UTILITIES

Competitive utility prices and available benefits make SC an affordable, pro-business location. SC averages rates **12% lower** in electricity and **6% lower** in natural gas.



## HOUSING

Columbia MSA:  
**\$185,000**

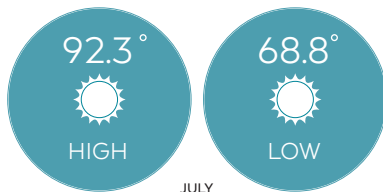


U.S. Average:  
**\$274,600**

## CLIMATE

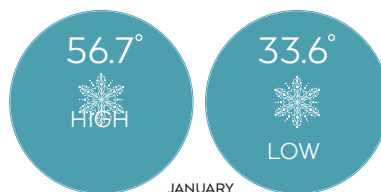
Temperate weather year-round provides the perfect atmosphere for outdoor and indoor living.

### SUMMER AVERAGES



AVERAGE PRECIPITATION: 47.23 INCHES

### WINTER AVERAGES



AVERAGE SNOWFALL: 0.4 INCHES

## HEALTHCARE

Hospitals in the Central SC Region have been repeatedly ranked among the top in South Carolina:

LEXINGTON MEDICAL CENTER "BEST HOSPITAL" & "BEST PLACE TO HAVE A BABY" • PRISMA HEALTH SYSTEM REPEATEDLY RECOGNIZED AS "BEST HOSPITAL SYSTEM" IN S.C. • PROVIDENCE HEALTH SYSTEM "2<sup>ND</sup> BEST HOSPITAL IN SC"

## PRIMARY & SECONDARY EDUCATION

**83+**  
SCHOOLS

PUBLIC & PRIVATE  
IN LEXINGTON COUNTY

**265**  
SCHOOLS

PUBLIC & PRIVATE  
IN THE Central SC Region

**20**  
NATIONALLY RANKED  
HIGH SCHOOLS

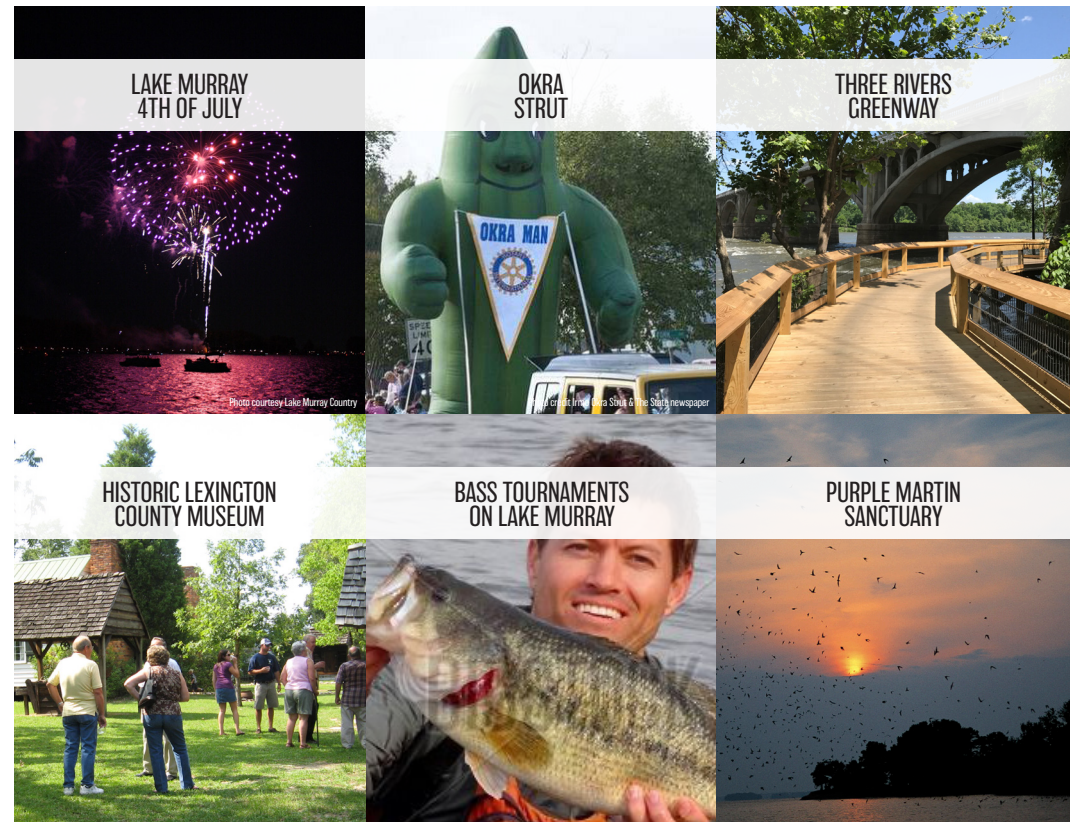
Central SC Region

**40,000**  
STUDENTS ENROLLED

80 PUBLIC CHARTER  
SCHOOLS IN S.C.

**89.2%**  
HIGH SCHOOL GRADUATE OR HIGHER

POPULATION 16+ STATEWIDE





## FEATURES & ATTRACTIONS

### The "Jewel of South Carolina"

FORMALLY KNOWN AS LAKE MURRAY, THIS POPULAR WATERING HOLE BOASTS ROUGHLY 500 MILES OF SHORELINE IN THE HEART OF SOUTH CAROLINA. NOT ONLY IS THE LAKE A SKIING, BOATING AND SWIMMING PARADISE, IT'S ALSO HOME TO SOME OF THE BEST FISHING IN THE NATION AND HOSTS NUMEROUS LOCAL, SC AND NATIONAL FISHING TOURNAMENTS.

### Lake Murray 4th of July Boat Parade & Fireworks

HELD FOR THE PAST THREE DECADES ON LAKE MURRAY, THIS ANNUAL TRADITION DRAWS THOUSANDS OF PEOPLE FOR A BOAT PARADE AND A MASSIVE FIREWORKS FESTIVAL TO CELEBRATE INDEPENDENCE DAY.

### SC State Farmers Market

THE SOUTH CAROLINA STATE FARMERS MARKET HAS SET A NEW STANDARD FOR A CHERISHED AMERICAN TRADITION. THE STATE-OF-THE-ART MARKETPLACE PROVIDES SOUTH CAROLINA'S AGRICULTURAL COMMUNITY A ONE-OF-A-KIND SHOWCASE, WHILE OFFERING AREA RESIDENTS AN ATTRACTIVE COMBINATION OF SHOPPING, DINING AND ENTERTAINMENT.

### Peachtree Rock Nature Preserve

450-ACRE HERITAGE PRESERVE FEATURING DIVERSE ECOSYSTEMS, UNIQUE ROCK FORMATIONS, AND A WATERFALL IN LEXINGTON COUNTY.

### Congaree River

47-MILE RIVER FLOWING THROUGH LEXINGTON AND NEIGHBORING RICHLAND AND CALHOUN COUNTIES WITH FREE SCENIC ACCESS AT THE WEST COLUMBIA RIVERWALK & ROSEWOOD LANDING.

### South Carolina Peanut Party

GET TO KNOW THE "CAVIAR OF THE SOUTH" AT THIS LONG-RUNNING FESTIVAL IN PELION. SOUTH CAROLINIANS HAVE GROWN TO LOVE THESE SALTY LITTLE "GOOBERS" SO MUCH THAT THEY WERE NAMED THE STATE SNACK IN 2006.

### Okra Strut

NOT ONLY DO SOUTHERNERS LOVE FOOD, BUT WE LOVE TO CELEBRATE IT, TOO! THIS FESTIVAL IN LEXINGTON COUNTY PAYS HOMAGE TO THE CRUNCHY GREEN VEGETABLE, SERVING IT UP IN EVERY POSSIBLE WAY.

### An Explosive History

REFERRED TO AS "BOMB ISLAND" BY LOCALS, THIS ISLAND IN LAKE MURRAY WAS AMONG SEVERAL SITES ON THE LAKE USED FOR BOMBING PRACTICE RUNS DURING WORLD WAR II.

### Purple Martin Sanctuary

WITH THE LARGEST ROOSTING SITE IN NORTH AMERICA, THE PURPLE MARTIN SANCTUARY ON LAKE MURRAY IS A SUMMER GETAWAY FOR THOUSANDS OF BIRDS FLOCKING FROM THEIR WINTER DESTINATIONS.

### Colorful Art Scene

BOUTIQUE SHOPS AND STORES AREN'T THE ONLY PLACE TO SPOT SOMETHING APPEALING TO YOUR EYE. REGULAR ARTISAN MARKETS AND FESTIVALS ARE KNOWN TO POP UP THROUGHOUT THE COUNTY, FILLING STREETS WITH COLORFUL DISPLAYS OF CREATIVITY.



NEW TO LEXINGTON COUNTY IN 2015, THE BLOWFISH BASEBALL TEAM HAS HAD A PRESENCE IN THE MIDLANDS OF SOUTH CAROLINA FOR MORE THAN A DECADE. THEIR MOVE TO THE COUNTY HAS BEEN EMBRACED BY LOCALS AND HAS HELPED ENLIVEN THE ATMOSPHERE.

THE RIVERBANKS ZOO AND GARDEN IS A 170-ACRE ZOO, AQUARIUM, AND BOTANICAL GARDEN LOCATED ALONG THE SALUDA RIVER. THE BOTANICAL GARDEN ENTRANCE PROVIDES A SCENIC ENTRANCE FROM LEXINGTON COUNTY.

# NOTES

[illegible]



The Central SC Alliance (CSCA) is a full-service professional economic development organization, founded in 1994 as a 501(c)(3) not-for-profit, public/private partnership, engaged in the recruitment of capital investment and jobs to the heart of South Carolina. Services provided by CSCA include: Marketing, Research, Project Management and Economic Development Consulting.

CSCA represents the capital city of Columbia and eight counties: Calhoun, Clarendon, Fairfield, Kershaw, Lexington, Newberry, Orangeburg and Richland.

## CONTACT US

1201 Main Street, Ste 100  
Columbia, SC 29201 (USA)

+1.803.733.1131

[www.centralsc.org](http://www.centralsc.org)



212 S. Lake Drive, Ste 502, Lexington, SC 29072  
(803) 785-6818

[lexingtoncountyusa.sc.gov](http://lexingtoncountyusa.sc.gov)

Thank you to our partners for their contributions in  
content and images included in this publication.