

FOR SALE > ±7,200 SF OFFICE BUILDING



Westpark Business Park

128 STONEMARK LANE, COLUMBIA, SOUTH CAROLINA 29210



Suburban Office Space

Located in the St. Andrews submarket, 128 Stonemark Lane is a two story, ±7,200 square foot office building situated in Westpark Business Park.

The property offers convenient access to I-26, I-20 and is less than a 10 minute drive from downtown Columbia.

Building Amenities

- > Well maintained property, an attractive option for users interested in a suburban office location.
- > Layout consist of 14 offices, 2 conference rooms and a large storage room with exterior access.
- > Includes 23 free surface parking spaces
- > Approximately 0.86 acres
- > Sale price: \$525,000

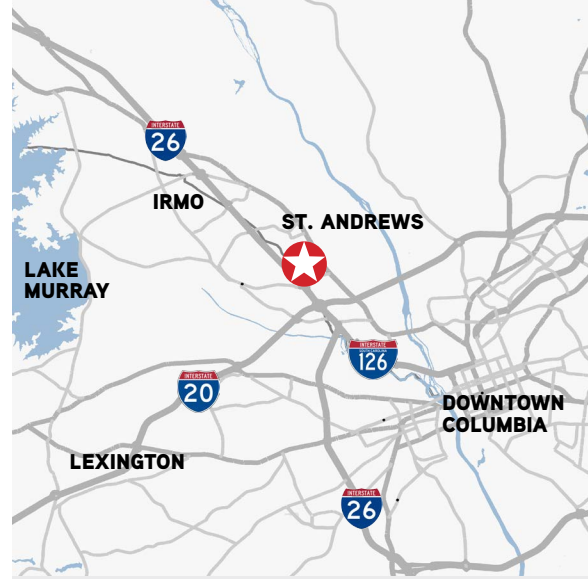
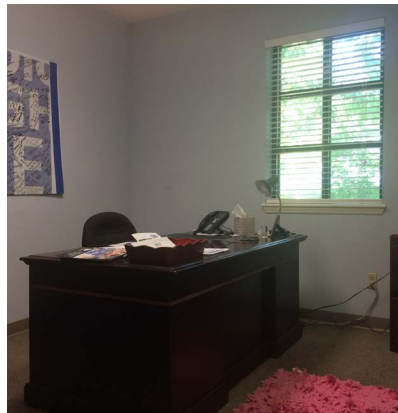
CRAIG WAITES
+1 803 401 4224
craig.waites@colliers.com

BRAXTON TAYLOR
+1 803 401 4255
braxton.taylor@colliers.com

PHILIP VANN
+1 803 401 4254
philip.vann@colliers.com

COLLIERS INTERNATIONAL
1301 Gervais Street, Suite 600
Columbia, SC 29201
www.colliers.com/southcarolina

128 Stonemark Lane > Property Photos



Contact Us

CRAIG WAITES

+1 803 401 4224

craig.waites@colliers.com

BRAXTON TAYLOR

+1 803 401 4255

braxton.taylor@colliers.com

PHILIP VANN

+1 803 401 4254

philip.vann@colliers.com

COLLIERS INTERNATIONAL
1301 Gervais Street, Suite 600
Columbia, SC 29201

www.colliers.com/southcarolina

This document has been prepared by Colliers International for advertising and general information only. Colliers International makes no guarantees, representations or warranties of any kind, expressed or implied, regarding the information including, but not limited to, warranties of content, accuracy and reliability. Any interested party should undertake their own inquiries as to the accuracy of the information. Colliers International excludes unequivocally all inferred or implied terms, conditions and warranties arising out of this document and excludes all liability for loss and damages arising there from. This publication is the copyrighted property of Colliers International and/or its licensor(s). ©2012. All rights reserved.

