

Industrial Site Available

McQueen Street
West Columbia, SC 29172
(Lexington County)

Land Size: 27.77 Acres

Lexington Tax Map-#
006896-03-19

Road Frontage 1,200 feet

Zoned ID- Intensive
Development

Water City of Cayce 10' line

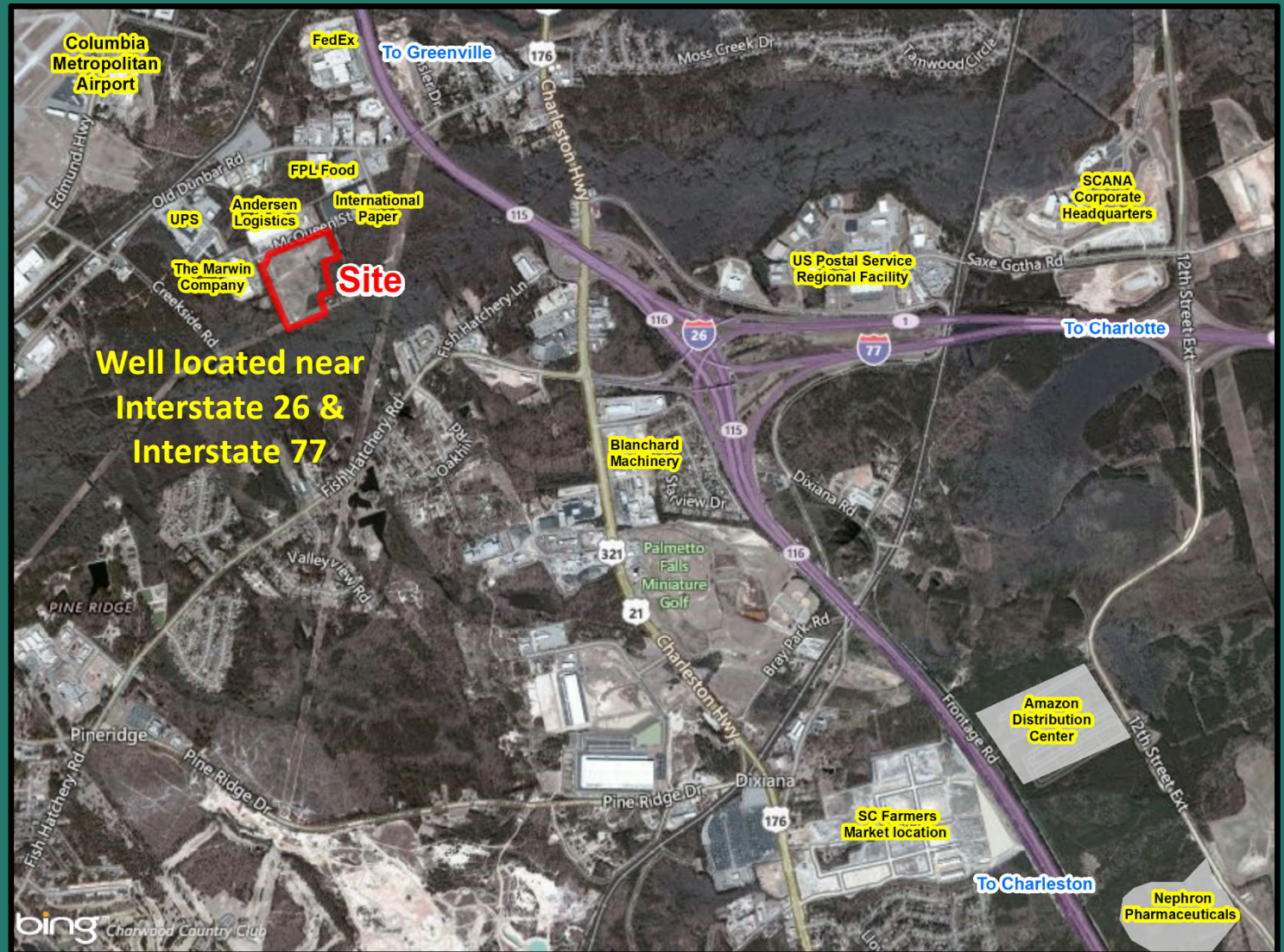
Sewer City of Cayce 8' line

Electric & Gas- SCE&G

Site is level and has been
cleared

Latitude: 33.932057
Longitude: -81.093015

Sale price \$610,000
(\$22,000/ac.)

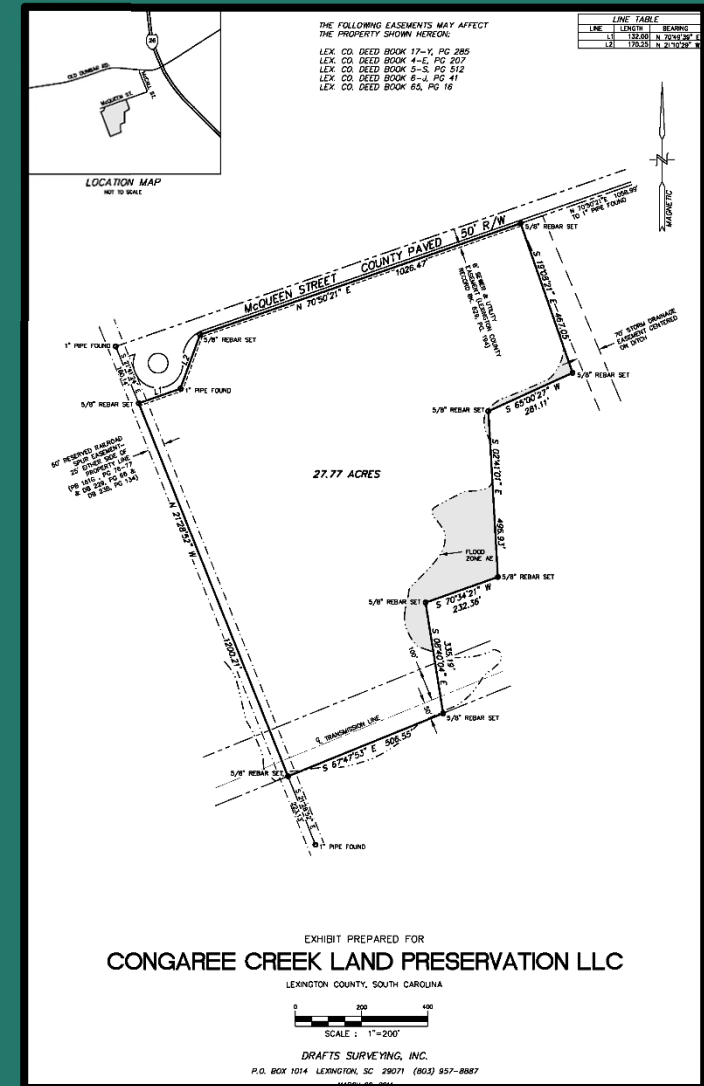


Excellent Industrial Development Opportunity
Land use Industrial, Warehousing /Distribution/Manufacturing

Industrial Site Available



- Columbia is ideally located to serve operations in Greenville and Charleston.
- University of South Carolina main campus has over 27,000 students with 4,500 staff.
- The State Capitol complex and nearby departments employ over 10,000 people.
- Palmetto Richland, Providence, and Palmetto Baptist hospitals employ over 11,000 people.
- Excellent Regional Distribution Location.



Nearby uses close to the site include: Columbia Metropolitan Airport, United States Post Office Regional Distribution Center, UPS Ground & Air Hubs, Federal Express, Amazon, Nephron Pharmaceuticals, SCE&G Corporate Headquarters