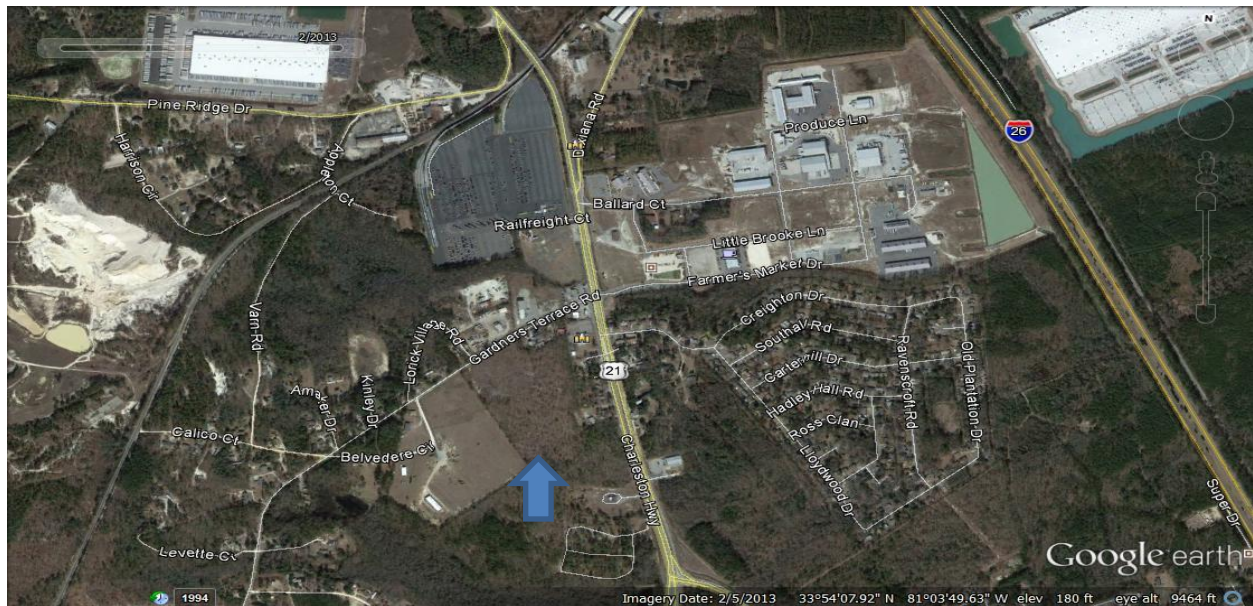




For Sale

20 Acre Commercial/Industrial Parcel
Gardners Terrace • Lexington, SC
\$600,000

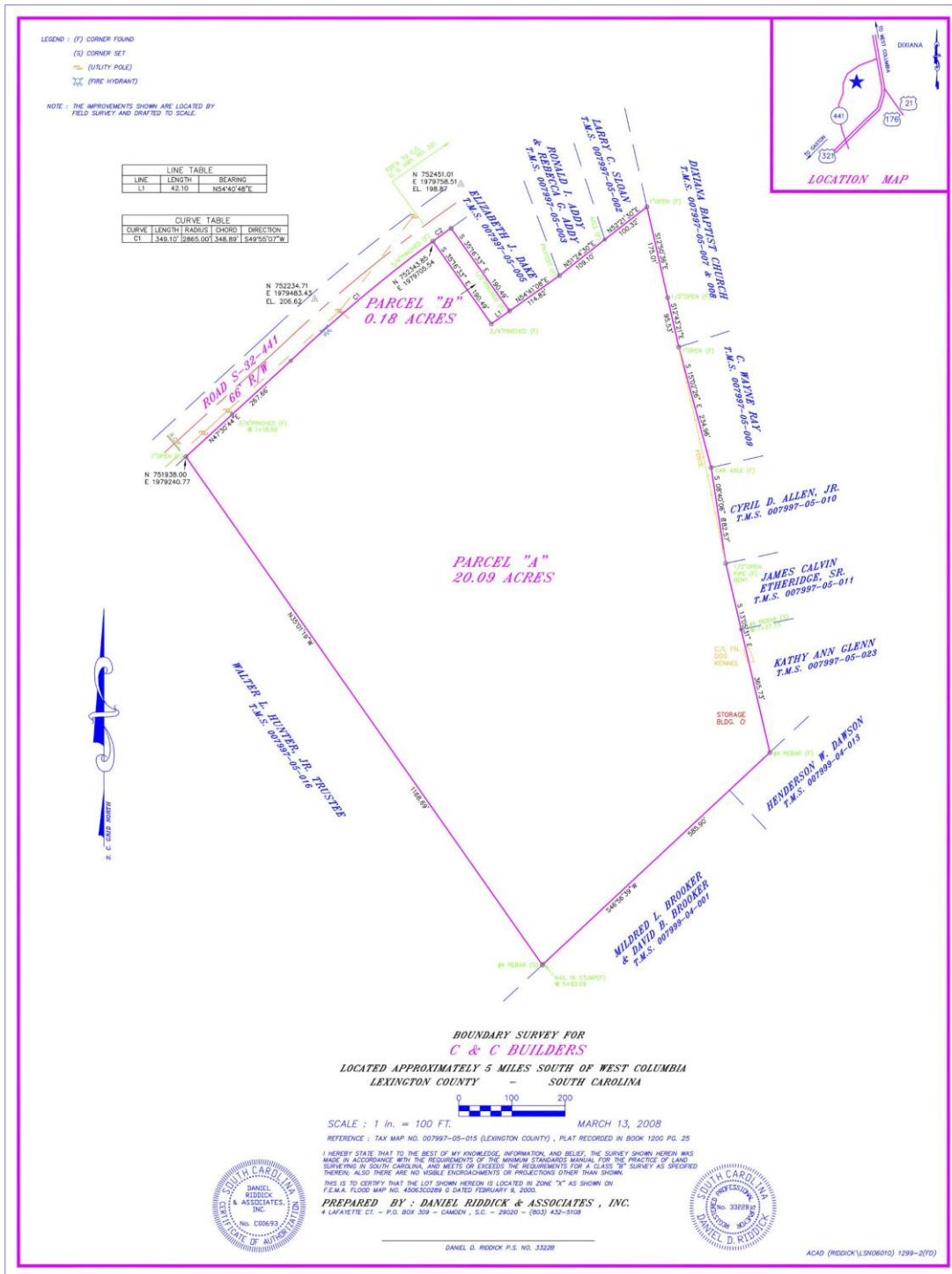
For more information contact **Walker Cate** @ 803-260-0711 or email walkercate300@gmail.com



Property Details

- 20 Acres on Gardners Terrace
- Signalized Intersection
- TMS # - 007997- 05 – 015
- Gentle Topography
- Old Charleston Highway –US 21/321
- Utilities are available – it is the responsibility of the Buyer to verify capacities and accessibility

- Across from New Farmers Market and Just south of the Lexington Co. Industrial Park
- Zoned ID (Allows for Commercial, Industrial and Residential uses)



Southern Visions Realty • 955 Old Cherokee Road • Lexington, South Carolina
Contact: Walker Cate @ 803-260-0711 or Email walkercate300@gmail.com 2/17/15