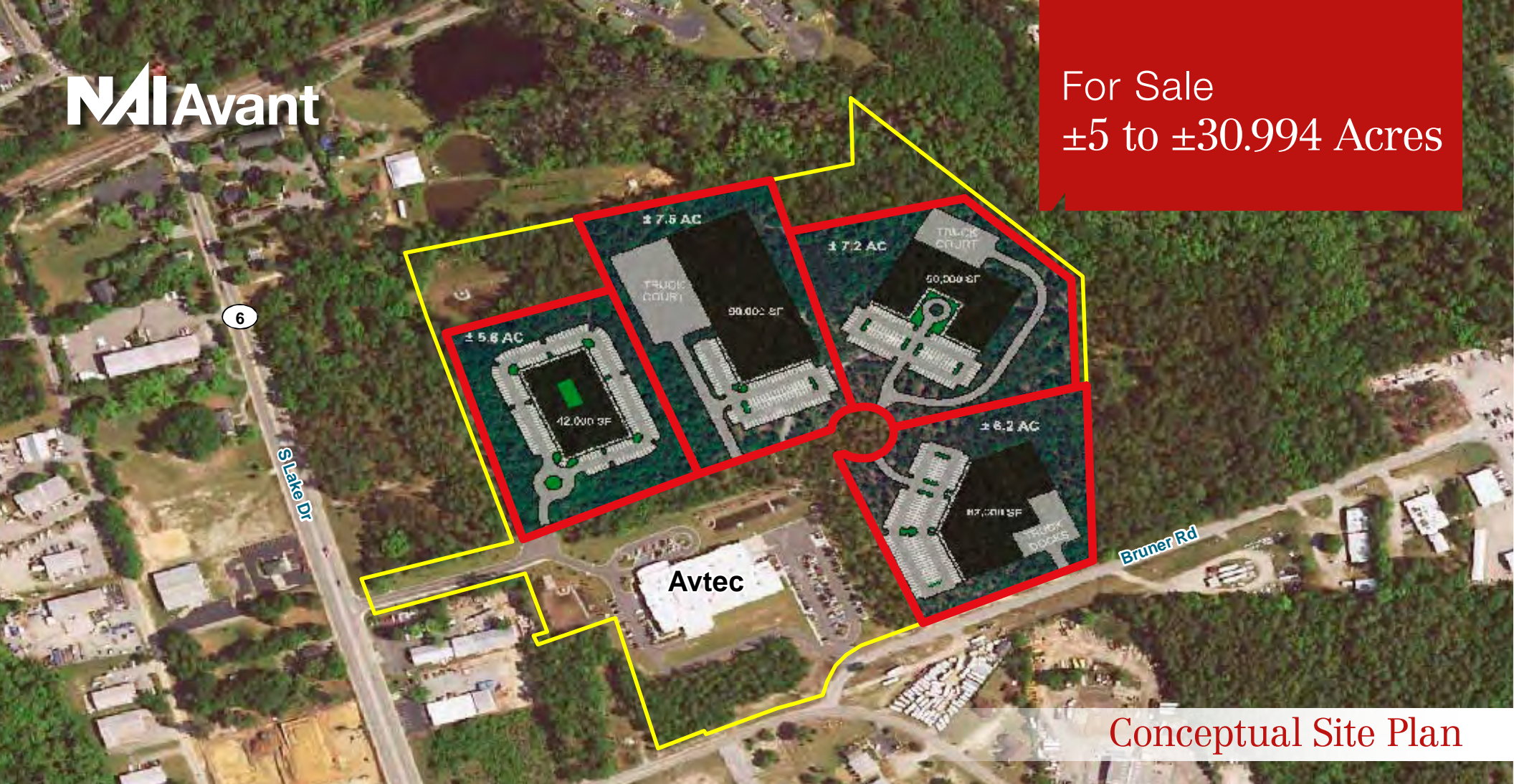


For Sale  
±5 to ±30.994 Acres



Conceptual Site Plan

# Horizon Technology Park

S. Lake Drive & Glassmaster Road  
Lexington, South Carolina

For more information:

**Nick Stomski**

+1 803 744 9859 • [nstomski@naiavant.com](mailto:nstomski@naiavant.com)

NO WARRANTY OR REPRESENTATION, EXPRESS OR IMPLIED, IS MADE AS TO THE ACCURACY OF THE INFORMATION CONTAINED HEREIN, AND THE SAME IS SUBMITTED SUBJECT TO ERRORS, OMISSIONS, CHANGE OF PRICE, RENTAL OR OTHER CONDITIONS, PRIOR SALE, LEASE OR FINANCING, OR WITHDRAWAL WITHOUT NOTICE, AND OF ANY SPECIAL LISTING CONDITIONS IMPOSED BY OUR PRINCIPALS NO WARRANTIES OR REPRESENTATIONS ARE MADE AS TO THE CONDITION OF THE PROPERTY OR ANY HAZARDS CONTAINED THEREIN ARE ANY TO BE IMPLIED.

# For Sale

Horizon Technology Business Park  
Lexington, South Carolina

## Location

Horizon Technology Park is a developing professional Columbia Metropolitan park in the Lexington submarket. The well-designed park offers flexibility and is the new home of Avtec, Inc., which provides Internet Protocol (IP) dispatch console solutions for the manufacturing, transportation, public safety, utility, business and government markets. The Park is located at Exit 55 off Interstate 20. The site sits near the interchange providing easy access for truck traffic, as well as, easier access for employees. The Park has excellent access to the growing Lexington market and emerging markets such as Aiken, Kershaw and outlying Lexington County.

The site plan depicts four sites that could be made available. The Park has the flexibility to meet unique size requirements and configurations. Infrastructure for access to the Park is underway and expected to be completed by August of 2013. The Park will have access to a 12" Town of Lexington water line, 8" Town of Lexington sewer line, on site storm drainage, overhead existing electric at S. Lake Drive and fiber optic cable. The Park will be accessible from S. Lake Drive with additional access from the road. The road servicing of the Park will be deeded over to Lexington County and delivered to County class specifications.

## Sales Price

Lots are competitively priced at \$60,000 per acre

## Zoning

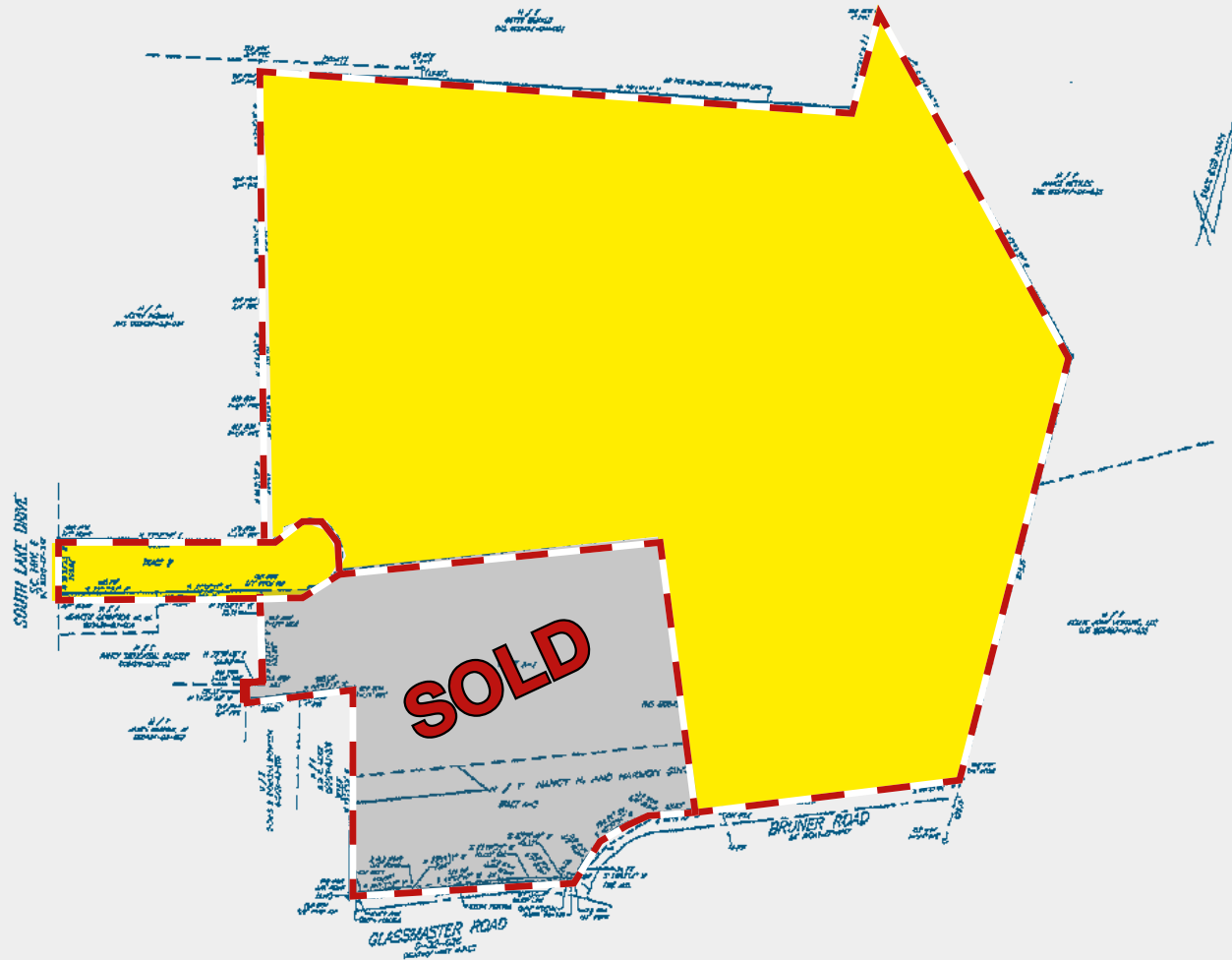
ID, Lexington County, annexation into the Town of Lexington will be required

## Comments

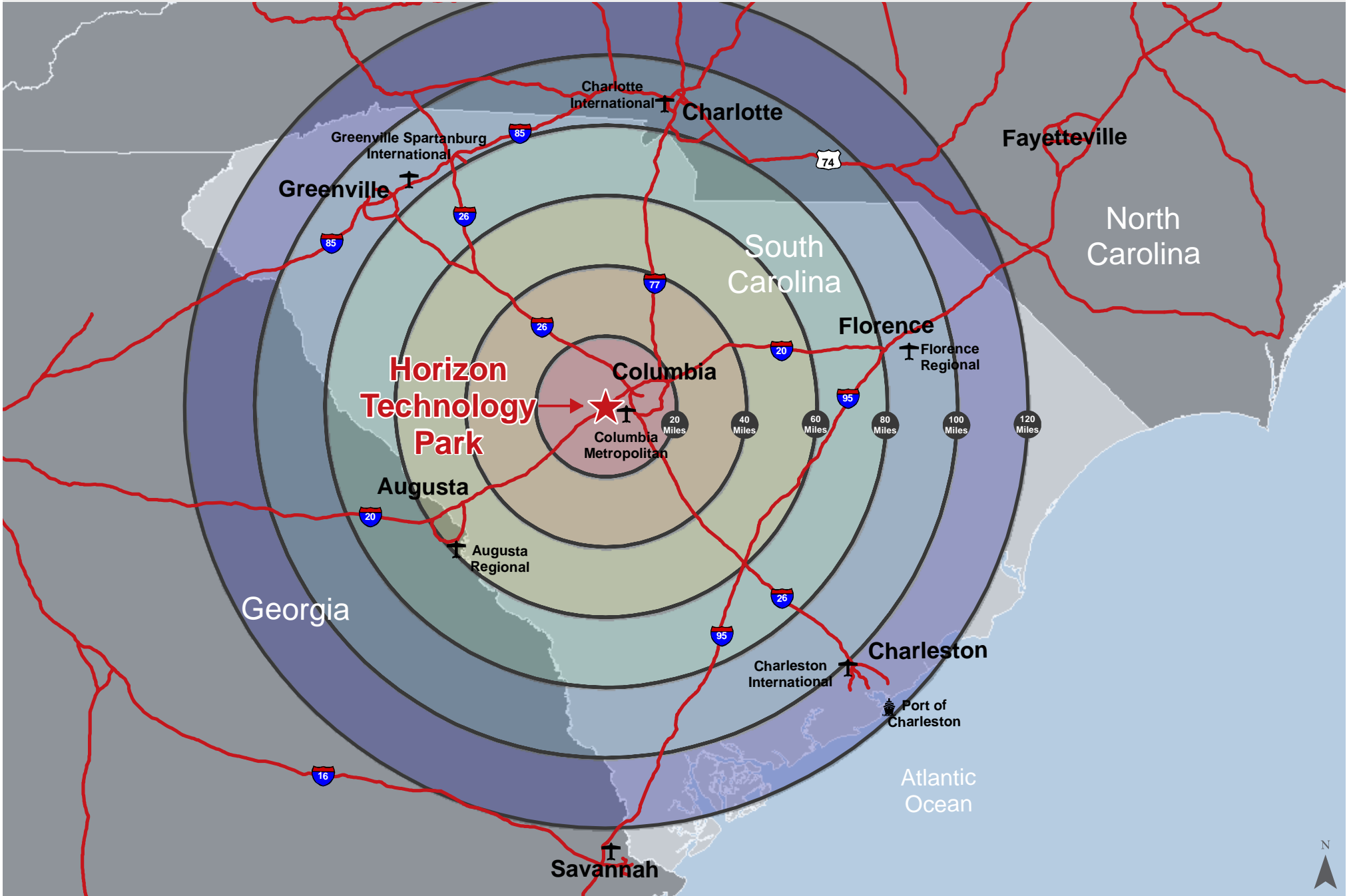
The Park has relatively flat topography with a gradual slope to the northwest quadrant

For Sale

Horizon Technology Business Park  
Lexington, South Carolina



# Location



Map Updated: Monday, April 18, 2016. This information submitted is not guaranteed. Although obtained from reliable sources, all information should be confirmed prior to use or reliance upon the information. This document may not be reproduced in whole or in part without the express written consent of NAI Avant.

# Location

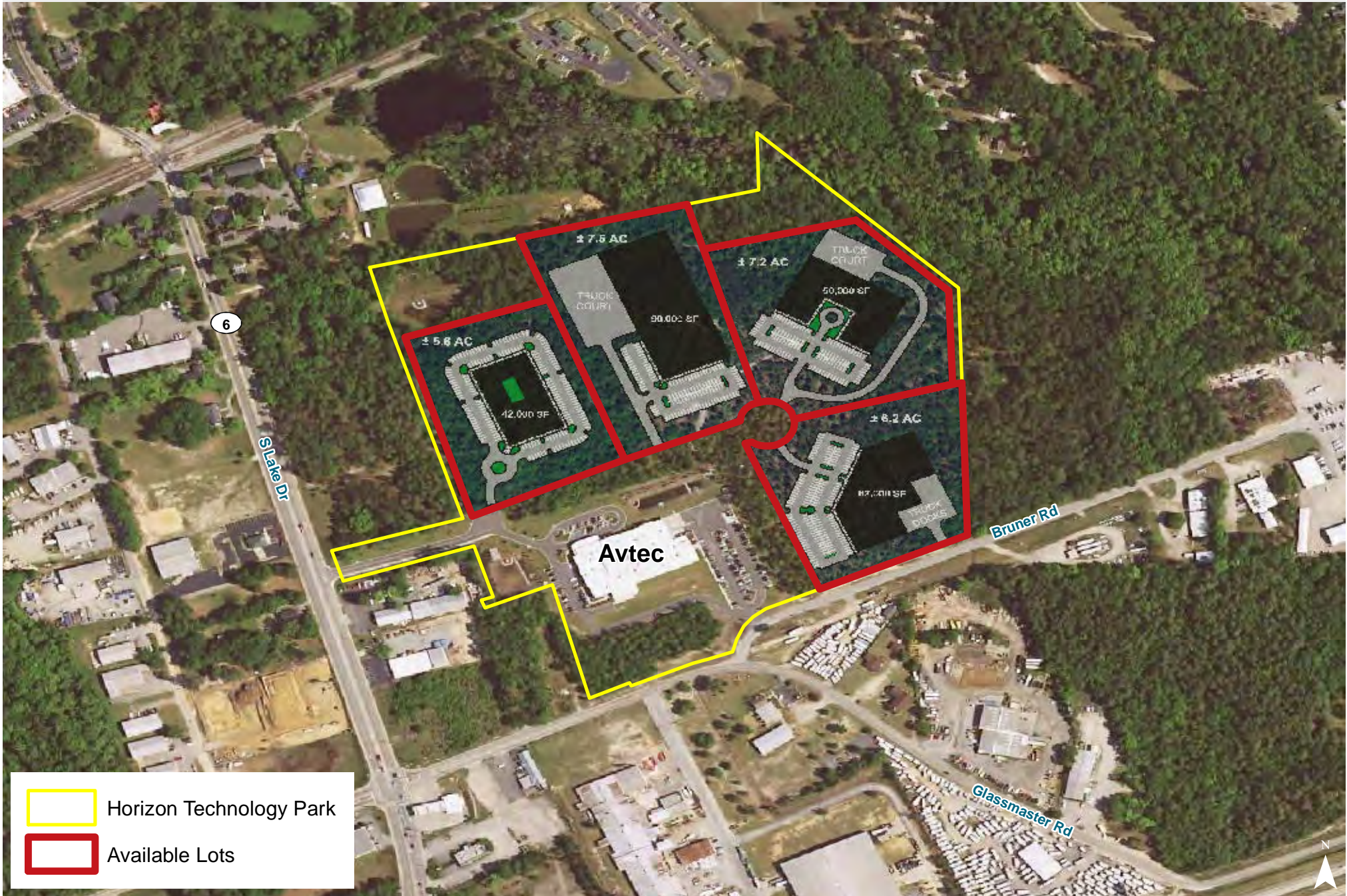


Map Updated: Monday, April 18, 2016. This information submitted is not guaranteed. Although obtained from reliable sources, all information should be confirmed prior to use or reliance upon the information. This document may not be reproduced in whole or in part without the express written consent of NAI Avant.



Map Updated: Sunday, April 17, 2016. This information submitted is not guaranteed. Although obtained from reliable sources, all information should be confirmed prior to use or reliance upon the information. This document may not be reproduced in whole or in part without the express written consent of NAI Avant.

# Conceptual Site Plan



Map Updated: Sunday, April 17, 2016. This information submitted is not guaranteed. Although obtained from reliable sources, all information should be confirmed prior to use or reliance upon the information. This document may not be reproduced in whole or in part without the express written consent of NAI Avant.